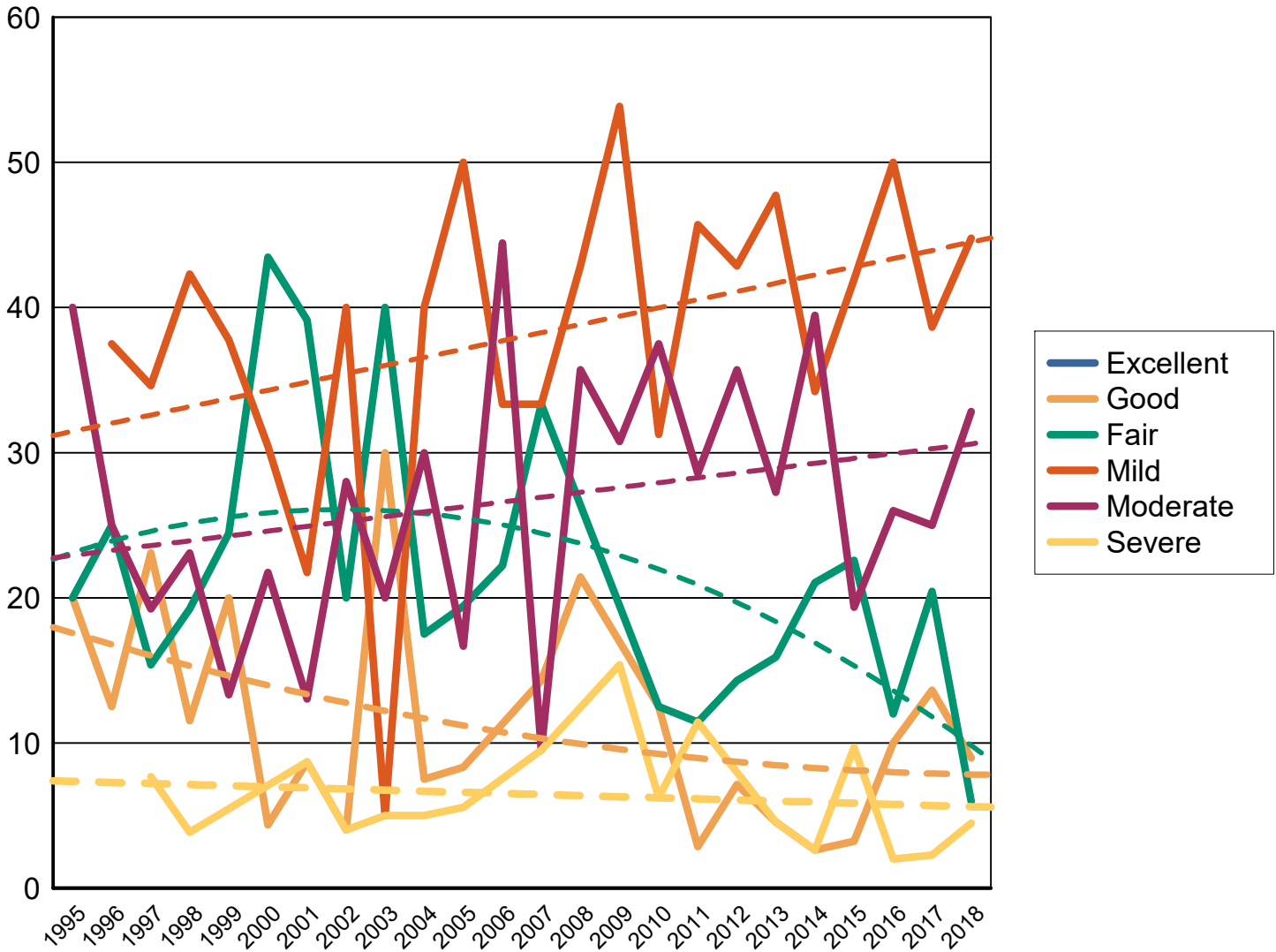


All data as of 12-31-2018

Dysplastic rank, all breeds with more than 100 cases

		Normals		Equival or Carrier		Abnormal	
HIPS	1 of 181	216	28.57%	7	0.93%	533	70.50% CHIC required
ELBOW	2 of 121	127	59.91%	1	0.47%	84	39.62%
CARDIAC		285	100.00%	0		0	
THYROID		28	73.68%	9	23.68%	1	2.63%
TRACHEAL HYPOPLASIA		13	86.67%	1	6.67%	1	6.67%
ADVANCED CARDIAC		16	100.00%	0		0	
SHOULDER		1	100.00%	0		0	
SERUM BILE ACID		2	100.00%	0		0	
DENTITION DATABASE		17	100.00%	0		0	
OFA EYE Registry		376	97.16%	0		11	2.84% CHIC required
SPINE		6	16.67%	0		30	83.33%
LEGG-CALVE-PERTHES		117	99.15%	0		1	0.85%
NECROTIZING MENINGOENCEPHALITIS		396	76.30%	117	22.54%	6	1.16% CHIC required
PYRUVATE KINASE DEFICIENCY		59	100.00%	0		0	
PATELLA		852	94.56%	0		49	5.44% CHIC required
BAER HEARING TEST		1	100.00%	0		0	
DEGENERATIVE MYELOPATHY		306	54.94%	183	32.85%	68	12.21%
PRIMARY LENS LUXATION		4	80.00%	1	20.00%	0	

Hip percentages by rating with trendlines



**Percent submitted to the open registry
HIPS**

Report year	Cases	Excellent %	Good %	Fair %	Borderline %	Mild %	Moderate %	Severe %
1979						1 50.00%	1 50.00%	
1986			1 33.33%			1 33.33%	1 33.33%	
1987			1 16.67%				3 50.00%	2 33.33%
1988			3 50.00%			2 33.33%	1 16.67%	
1990				1 14.29%		2 28.57%	2 28.57%	2 28.57%
1991						2 100.00%		
1992				1 14.29%		4 57.14%	2 28.57%	
1993			1 16.67%	1 16.67%		1 16.67%	3 50.00%	
1994			1 33.33%				1 33.33%	1 33.33%
1995			1 20.00%	1 20.00%	1 20.00%		2 40.00%	
1996			1 12.50%	2 25.00%		3 37.50%	2 25.00%	
1997		7.69%	6 23.08%	4 15.38%		9 34.62%	5 19.23%	2 7.69%
1998		7.69%	3 11.54%	5 19.23%		11 42.31%	6 23.08%	1 3.85%
1999			9 20.00%	11 24.44%	1 2.22%	17 37.78%	6 13.33%	
2000		8.70%	1 4.35%	10 43.48%		7 30.43%	5 21.74%	
2001		43.48%	2 8.70%	9 39.13%	2 8.70%	5 21.74%	3 13.04%	2 8.70%
2002		40.00%	1 4.00%	5 20.00%	1 4.00%	10 40.00%	7 28.00%	1 4.00%
2003		40.00%	6 30.00%	8 40.00%		1 5.00%	4 20.00%	1 5.00%
2004		25.00%	3 7.50%	7 17.50%		16 40.00%	12 30.00%	2 5.00%
2005		41.67%	3 8.33%	7 19.44%		18 50.00%	6 16.67%	2 5.56%
2006		50.00%		4 22.22%		6 33.33%	8 44.44%	
2007		52.38%	3 14.29%	7 33.33%		7 33.33%	2 9.52%	2 9.52%

Percent submitted to the open registry

HIPS

Report year	Cases	Excellent %	Good %	Fair %	Borderline %	Mild %	Moderate %	Severe %
2008			3 21.43%			6 42.86%	5 35.71%	
	50.00%							
2009						7 53.85%	4 30.77%	2 15.38%
	69.23%							
2010			2 12.50%	2 12.50%		5 31.25%	6 37.50%	1 6.25%
	43.75%							
2011			1 2.86%	4 11.43%		16 45.71%	10 28.57%	4 11.43%
	71.43%							
2012			3 7.14%	6 14.29%		18 42.86%	15 35.71%	
	78.57%							
2013			2 4.55%	7 15.91%		21 47.73%	12 27.27%	2 4.55%
	70.45%							
2014			1 2.63%	8 21.05%		13 34.21%	15 39.47%	1 2.63%
	60.53%							
2015			1 3.23%	7 22.58%	1 3.23%	13 41.94%	6 19.35%	3 9.68%
	74.19%							
2016			5 10.00%	6 12.00%		25 50.00%	13 26.00%	1 2.00%
	54.00%							
2017			6 13.64%	9 20.45%		17 38.64%	11 25.00%	1 2.27%
	56.82%							
2018	67	1 1.49%	6 8.96%	4 5.97%	1 1.49%	30 44.78%	22 32.84%	3 4.48%
	56.72%							
Totals	756	1 0.13%	78 10.30%	137 18.10%	7 0.92%	295 38.97%	201 26.55%	37 4.89%

ELBOW

<i>Report Year</i>	<i>Cases</i>	<i>Normal %</i>	<i>Grade 1 %</i>	<i>Grade 2 %</i>	<i>Grade 3 %</i>	<i>Borderline %</i>
1994	1				1	100.00%
1995	1			1	100.00%	
1997	1	1				100.00%
1998	4	2	2			
		50.00%	50.00%			
1999	5		3		1	1
			60.00%		20.00%	20.00%
2000	6	4	1	1		
		66.67%	16.67%	16.67%		
2001	9	3	3	3		
		33.33%	33.33%	33.33%		
2002	4	2	2			
		50.00%	50.00%			
2003	4	3	1			
		75.00%	25.00%			
2004	17	5	6	6		
		29.41%	35.29%	35.29%		
2005	13	4	4	5		
		30.77%	30.77%	38.46%		
2006	8	3	1	3	1	
		37.50%	12.50%	37.50%	12.50%	
2007	10	4	4	2		
		40.00%	40.00%	20.00%		
2008	8	4	3	1		
		50.00%	37.50%	12.50%		
2009	4	3	1			
		75.00%	25.00%			
2010	10	10				
		100.00%				
2011	6	6				
		100.00%				
2012	15	13	1	1		
		86.67%	6.67%	6.67%		
2013	12	9	2	1		
		75.00%	16.67%	8.33%		
2014	14	7	6	1		
		50.00%	42.86%	7.14%		
2015	5	4	1			
		80.00%	20.00%			

ELBOW

<i>Report Year</i>	<i>Cases</i>	<i>Normal</i> <i>%</i>	<i>Grade 1</i> <i>%</i>	<i>Grade 2</i> <i>%</i>	<i>Grade 3</i> <i>%</i>	<i>Borderline</i> <i>%</i>
2016	18	13 72.22%	4 22.22%	1 5.56%		
2017	12	11 91.67%	1 8.33%			
2018	25	16 64.00%	8 32.00%	1 4.00%		
Totals	212	127	54	27	3	1
	212	59.91%	25.47%	12.74%	1.42%	0.47%

BAER HEARING TEST

<i>Report year</i>	<i>Cases</i>	<i>Normal</i>	<i>% Normal</i>	<i>Abnormal</i>	<i>% Abnormal</i>	<i>Equivocal</i>	<i>% Equivocal</i>
PUG							
2009	1	1	100.0				
Totals	1	1	100.0				

CARDIAC

<i>Report year</i>	<i>Cases</i>	<i>Normal</i>	<i>% Normal</i>	<i>Abnormal</i>	<i>% Abnormal</i>	<i>Equivocal</i>	<i>% Equivocal</i>
PUG							
1999	1	1	100.0				
2003	2	2	100.0				
2004	5	5	100.0				
2005	4	4	100.0				
2006	4	4	100.0				
2007	4	4	100.0				
2008	9	9	100.0				
2009	12	12	100.0				
2010	18	18	100.0				
2011	27	27	100.0				
2012	12	12	100.0				
2013	30	30	100.0				
2014	23	23	100.0				
2015	17	17	100.0				
2016	32	32	100.0				
2017	44	44	100.0				
2018	41	41	100.0				
Totals	285	285	100.0				

DEGENERATIVE MYELOPATHY

<i>Report year</i>	<i>Cases</i>	<i>Normal</i>	<i>% Normal</i>	<i>Abnormal</i>	<i>% Abnormal</i>	<i>Carrier</i>	<i>% Carrier</i>
PUG							
2009	5	3	60.0			2	40.0
2010	20	13	65.0	1	5.0	6	30.0
2011	45	29	64.4	3	6.7	13	28.9
2012	61	39	63.9	6	9.8	16	26.2
2013	44	23	52.3	6	13.6	15	34.1
2014	64	37	57.8	9	14.1	18	28.1
2015	74	40	54.1	9	12.2	25	33.8
2016	94	47	50.0	15	16.0	32	34.0
2017	81	39	48.2	8	9.9	34	42.0
2018	69	36	52.2	11	15.9	22	31.9
Totals	557	306	54.9	68	12.2	183	32.9

DENTITION DATABASE

<i>Report year</i>	<i>Cases</i>	<i>Normal</i>	<i>% Normal</i>	<i>Abnormal</i>	<i>% Abnormal</i>
PUG					

DENTITION DATABASE

<i>Report year</i>	<i>Cases</i>	<i>Normal</i>	<i>% Normal</i>	<i>Abnormal</i>	<i>% Abnormal</i>
2016	11	11	100.0		
2018	6	6	100.0		
Totals	17	17	100.0		

EYES

<i>Report year</i>	<i>Cases</i>	<i>Normal</i>	<i>% Normal</i>	<i>Abnormal</i>	<i>% Abnormal</i>	<i>Breeder opt.</i>	<i>% Breeder opt.</i>
PUG							
2012	1	1	100.0				
2013	28	10	35.7	3	10.7	15	53.6
2014	29	15	51.7	2	6.9	12	41.4
2015	27	15	55.6	2	7.4	10	37.0
2016	41	26	63.4	1	2.4	14	34.2
2017	36	24	66.7			12	33.3
2018	60	13	21.7	3	5.0	44	73.3
Totals	222	104	46.9	11	5.0	107	48.2

LEGG-CALVE-PERTHES

<i>Report year</i>	<i>Cases</i>	<i>Normal</i>	<i>% Normal</i>	<i>Abnormal</i>	<i>% Abnormal</i>
PUG					
2003	1	1	100.0		
2004	1	1	100.0		
2005	35	35	100.0		
2006	1	1	100.0		
2008	1	1	100.0		
2009	3	3	100.0		
2010	4	4	100.0		
2011	1			1	100.0
2012	2	2	100.0		
2013	3	3	100.0		
2014	12	12	100.0		
2015	5	5	100.0		
2016	11	11	100.0		
2017	13	13	100.0		
2018	25	25	100.0		
Totals	118	117	99.2	1	0.9

NECROTIZING MENINGOENCEPHALITIS

<i>Report year</i>	<i>Cases</i>	<i>Normal</i>	<i>% Normal</i>	<i>Abnormal</i>	<i>% Abnormal</i>	<i>Carrier</i>	<i>% Carrier</i>
PUG							
2010	1					1	100.0
2011	174	137	78.7	2	1.2	35	20.1
2012	44	31	70.5	3	6.8	10	22.7
2013	56	43	76.8	1	1.8	12	21.4
2014	35	26	74.3			9	25.7

NECROTIZING MENINGOENCEPHALITIS

<i>Report year</i>	<i>Cases</i>	<i>Normal</i>	<i>% Normal</i>	<i>Abnormal</i>	<i>% Abnormal</i>	<i>Carrier</i>	<i>% Carrier</i>
2015	64	46	71.9			18	28.1
2016	46	31	67.4			15	32.6
2017	40	35	87.5			5	12.5
2018	59	47	79.7			12	20.3
Totals	519	396	76.3	6	1.2	117	22.5

PATELLA

<i>Report year</i>	<i>Cases</i>	<i>Normal</i>	<i>% Normal</i>	<i>Abnormal</i>	<i>% Abnormal</i>
PUG					
1994	1	1	100.0		
1995	2	2	100.0		
1996	7	5	71.4	2	28.6
1997	16	13	81.3	3	18.8
1998	22	21	95.5	1	4.6
1999	11	11	100.0		
2000	26	25	96.2	1	3.9
2001	19	18	94.7	1	5.3
2002	32	32	100.0		
2003	21	19	90.5	2	9.5
2004	56	49	87.5	7	12.5
2005	37	35	94.6	2	5.4
2006	23	19	82.6	4	17.4
2007	18	17	94.4	1	5.6
2008	18	18	100.0		
2009	22	22	100.0		
2010	34	33	97.1	1	2.9
2011	46	45	97.8	1	2.2
2012	48	47	97.9	1	2.1
2013	73	70	95.9	3	4.1
2014	63	60	95.2	3	4.8
2015	53	51	96.2	2	3.8
2016	78	73	93.6	5	6.4
2017	92	91	98.9	1	1.1
2018	83	75	90.4	8	9.6
Totals	901	852	94.6	49	5.4

PRIMARY LENS LUXATION

<i>Report year</i>	<i>Cases</i>	<i>Normal</i>	<i>% Normal</i>	<i>Abnormal</i>	<i>% Abnormal</i>	<i>Carrier</i>	<i>% Carrier</i>
PUG							
2013	1					1	100.0
2018	4	4	100.0				
Totals	5	4	80.0			1	20.0

PYRUVATE KINASE DEFICIENCY

<i>Report year</i>	<i>Cases</i>	<i>Normal</i>	<i>% Normal</i>	<i>Abnormal</i>	<i>% Abnormal</i>	<i>Carrier</i>	<i>% Carrier</i>
PUG							
2014	6	6	100.0				
2015	8	8	100.0				
2016	5	5	100.0				
2017	15	15	100.0				
2018	25	25	100.0				
Totals	59	59	100.0				

SHOULDER

<i>Report year</i>	<i>Cases</i>	<i>Normal</i>	<i>% Normal</i>	<i>Abnormal</i>	<i>% Abnormal</i>
PUG					
2016	1	1	100.0		
Totals	1	1	100.0		

THYROID

<i>Report year</i>	<i>Cases</i>	<i>Normal</i>	<i>% Normal</i>	<i>Abnormal</i>	<i>% Abnormal</i>	<i>Equivocal</i>	<i>% Equivocal</i>
PUG							
1998	1					1	100.0
2001	2	1	50.0			1	50.0
2002	2	1	50.0			1	50.0
2003	2	2	100.0				
2004	4	3	75.0			1	25.0
2005	2	2	100.0				
2006	5	5	100.0				
2008	2	2	100.0				
2011	4	3	75.0			1	25.0
2012	2	2	100.0				
2013	2	1	50.0			1	50.0
2015	2	2	100.0				
2016	1	1	100.0				
2017	4	2	50.0	1	25.0	1	25.0
2018	3	1	33.3			2	66.7
Totals	38	28	73.7	1	2.6	9	23.7

TRACHEAL HYPOPLASIA

<i>Report year</i>	<i>Cases</i>	<i>Normal</i>	<i>% Normal</i>	<i>Abnormal</i>	<i>% Abnormal</i>	<i>Equivocal</i>	<i>% Equivocal</i>
PUG							
2012	1	1	100.0				
2016	3	3	100.0				
2017	1	1	100.0				
2018	10	8	80.0	2	20.0		
Totals	15	13	86.7	2	13.3		